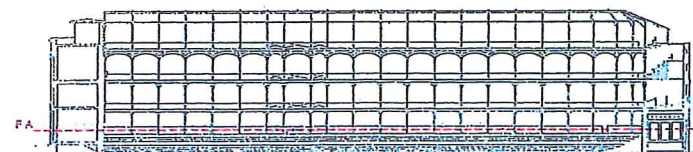
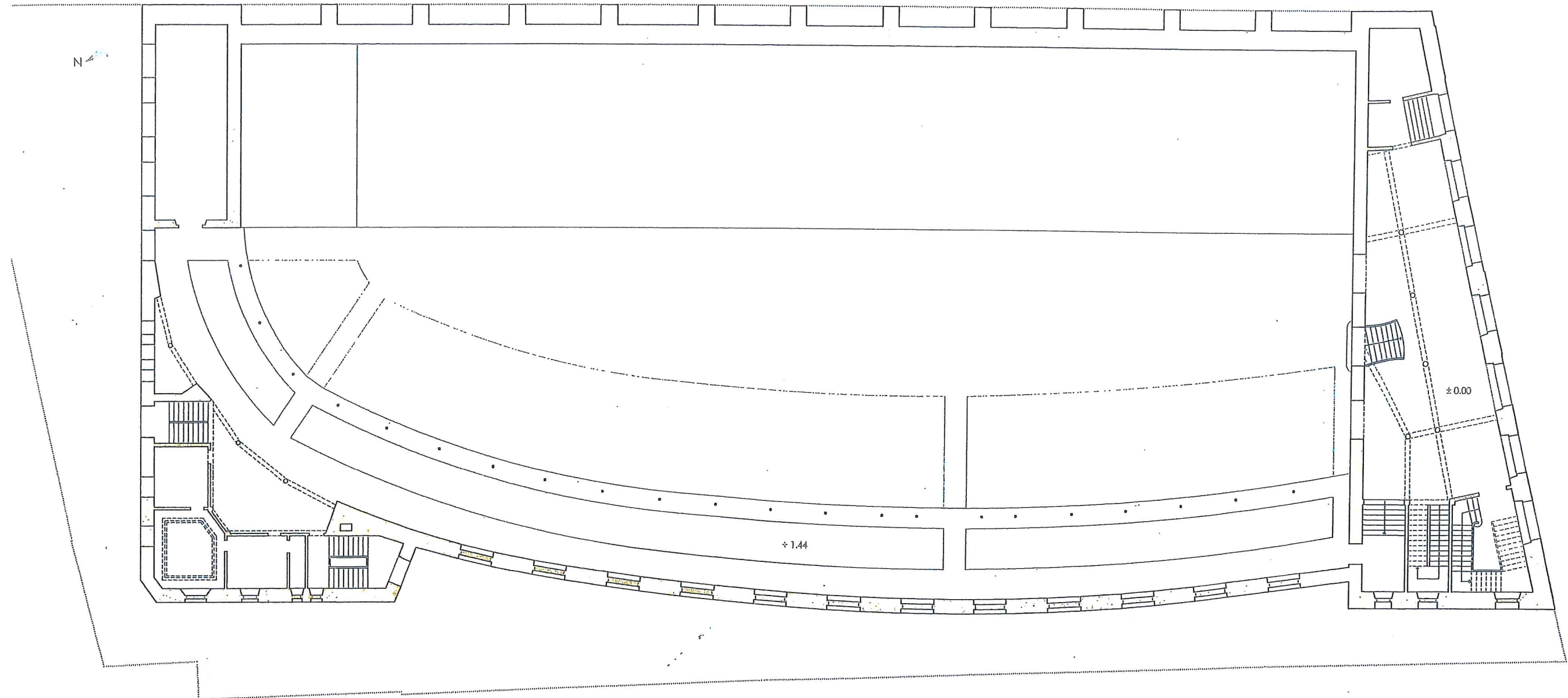


PLANTA DE ACCESO

SUPERFICIES CONSTRUIDAS ESTADO ORIGINAL

PLANTA	m ²
cancha	745,57
acceso	1.027,46
primera	1.027,46
segunda	1.027,46
tercera	368,06
TOTAL	4.196,01
patio	1.715,00



13 | 12 | 11 | 10 | 9 | 8 | 7 | 6 | 5 | 4 | 3 | 2